



06 DECEMBER
2007

B7 Baltic Islands Network

ANNUAL CONFERENCE 2007

B7 Annual Conference 2007

Enterprise Development

Innovation
Creativity
Triple Helix
Clusters
Uniqueness
Green



When this water tower was built it was a scar on the Bornholm landscape.
When Jørn Utzon became famous for the Sidney Opera House, it became a monument
to innovation and design.

What does innovation mean to you and your organisation?
Do you embrace or shy away from it?



WELCOME!



The B7 Bornholm Chairmanship welcomes you to their conference on Enterprise Development.

Date: 6. December 2007

Venue: Hotel Allinge, Bornholm

Time: 09.00-17.00

The Chairmanship invites politicians, civil servants, persons working with enterprise development from the B7 islands, together with representatives from the B7 countries, the Baltic Sea Organisations, and EU institutions.

The purpose of the Conference is to discuss the process, challenges and hurdles of setting up a structure for the development of economic growth potential.

Our ambition is that invited speakers and key leaders give the foundation for discussions around different themes on enterprise development.

If you have any questions concerning the conference please do not hesitate to contact the B7 Secretariat.

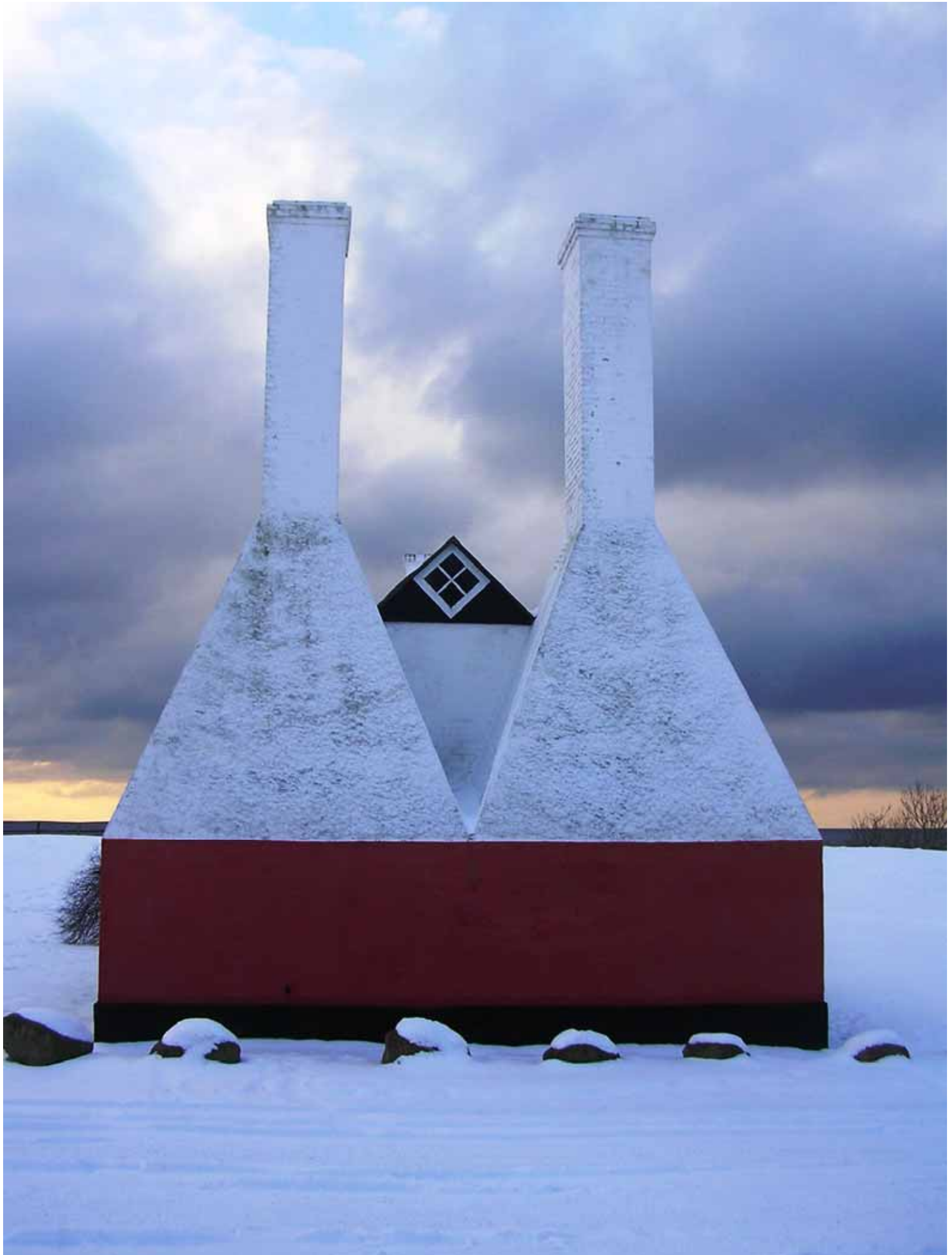
Bjarne Kristiansen
Mayor of Bornholm
B7 President



B7 Bornholm Secretariat 2007
Karen Lynn Jacobsen

Tel: +45 56 92 13 05
Fax: +45 56 92 13,
Mobile: +4560 26 13 05
e-mail: b7@brk.dk

Lars Nørby Johansen & Bjarne Kristiansen



PROGRAMME OVERVIEW

PROGRAMME for B7 ANNUAL CONFERENCE.

Dates: 05-07 December 2007
Venue: Bornholm, Hotel Allinge

Wednesday 05 December: INTERNAL MEETINGS

Morning arrival and check in

- 12.00-13.00 Lunch
- 13.30-17.00 Informal SC Meeting at NaturBornholm
- 14.00-17.00 Board Meeting at Hotel Allinge
- 14.00-16.00 WG PtP Meeting at Restaurant Købmandsgaarden
- 19.00- Dinner Restaurant "Det Gamle Posthus"

Thursday 06 December: OPEN CONFERENCE

- 09.00-12.00 Annual Conference Plenum Session
"The B7 Year 2007 and plans for 2008"
- 12.00-13.00 Buffet Lunch at Hotel Allinge
- 13.00-17.00 Conference "Enterprise Development"
- 19.00 - Official Dinner at Restaurant Købmandsgaarden

Friday 07 December: INTERNAL MEETINGS

- 09.00-12.00 SC Meeting
- 12.00-13.00 Lunch at Restaurant Købmandsgaarden
- 13.00 Departure

“The B7 Year 2007 and plans for 2008”

B7 Annual Conference Bornholm: Conference Day

Open plenum session:

The B7 Bornholm Chairmanship 2007 and B7 members present what they have been working on during the year.

The B7 Saaremaa Chairmanship 2008 presents its programme proposal for 2008.

Moderator: Jørgen Kvist

09.00-09.10	Welcome: The First Vice Mayor of Bornholm Jacob Kjøller
09.10-09.30	The B7 Bornholm Chairmanship report 2007 Jørgen Kvist & David Hunt
09.30-10.00	Major B7 Projects BEN Project: Reet Kokovkin Baltic Master: Jørgen Jespersen and Tommy Eliasson Transplan Energy Project: Jørgen Jespersen
10.00-10.20	WG PtP Henrik Eybye Nielsen/Martina Schwinkendorf
10.20-10.45	Coffee Break
10.45-11.00	B7 Facilitator's Report: David Hunt
11.00-11.10	A project Idea. Baltic Sea Environmental Association Morten van Donk
11.10-11.20	A project Idea. Youth and Unemployment Anders Nyholm
11.20-11.40	The B7 Saaremaa Chairmanship 2008 Toomas Kasemaa, Saaremaa Governor
11.40-11.45	Round up
12.00-13.00	Lunch

Enterprise Development:

THE QUOTES

- ⇒ "The days of the subsidy culture are gone!"
- ⇒ "Bornholm - open all year!"
- ⇒ "A fantastic place for children to grow up!"
- ⇒ "Bornholm must become an island that can look after itself!"

All of the above headlines reporting on Bornholm's Growth Forum. No one can deny that these are visionary goals and fantastic ambitions!

How does Bornholm plan to link vision, ambition and reality? What does it mean that Bornholm is "open all year"? And what constitutes a fantastic place for Children to grow up?

We have invited some of the key people working with business development to our conference.

Moderator: Jørgen Kvist

- | | |
|--------------|---|
| 13.00-13.15: | Introduction: Karen-Margrethe Hansen Bager
Leader Secretariat for Bornholm's Growth Forum |
| 13.15-13.45: | Peer Ederer.
The Lisbon Council. Director, Human Capital Project
Assessing the potential of countries going into the future and how they are developing their human capital across the entire life cycle. |
| 13.45-14.15: | Peter Billing:
Director Centre of Regional & Tourism Research
Strategic scenarios for the Baltic Sea Region. Bornholm in a development perspective. |
| 14.15-14.30: | <i>Coffee break</i> |
| 14.30-15.00: | Steen Nielsen:
Director, Jensen Denmark.
"Business Development - the challenges of business (or a cluster of businesses) in a "remote area". Developing employee competences. Developing competences of the unemployed people in your area." |
| 15.00-15.30: | Thor Gunnar Kofoed:
Perspective of a politician and farmer who is working to develop investment projects to promote energy self-sufficiency. |
| 15.30-16.00: | <i>Coffee break</i> |
| 16.00-16.30: | Henrik Brask Pedersen:
Head of Department, Regional Development, Region of Mid-Jutland.
Implementing a Business development strategy seen from the perspective of Region Mid-Jutland |
| 16.30-17.00: | Panel discussion / question and answer session. |

About the B7

WHAT is the B7?

The B7 is a co-operation of the 7 largest islands in the Baltic Sea from 5 different countries that started in 1989.

The B7 believes that as a co-operation they can influence developments for their common good.

The **PARTNERS** of the co-operation are, Bornholm (Denmark), Gotland (Sweden), Hiiumaa (Estonia), Rügen (Germany), Saaremaa (Estonia), Åland (autonomous region of Finland), Öland (Sweden)

BENEFITS and OPPORTUNITIES of the B7 CO-OPERATION:

- An organisation that can lobby to promote island issues at the national and international level.
- A co-operation to exchange experiences and ideas.
- An organisation that works at the political, public official and grass roots level
- A co-operation to develop interregional programmes and projects.
- The framework for an extensive network of contacts.

The PRINCIPLES of MEMBERSHIP are:

- The B7 co-operation is a partnership of equals.
- Each member is a Baltic Sea island.
- Each island contributes to the co-operation based on population size.

FACTS ABOUT B7

- Co-operation started in 1989.
- Focuses on the development of islands.
- Develops and implements large and small projects, events, conferences, exchanges.
- Operations managed by an annual, rotating Chairmanship and Secretariat.
- Works through ad hoc workgroups.
- Participates in developing strategies and solutions for tackling key island issues such as transport, communication.
- Started with one island being a member of the EU. Now all islands are EU members.



Bornholm



Gotland on Bornholm

The Baltic Sea Islands' Dimension

Dimension	Key issues for islands
Access - transport	No 1 issue limiting growth & development. e.g. costs and frequency.
Comparative disparities	Policies often favour major centres. Baltic Sea Islands experience limited synergy benefits resulting from competition with neighbouring regions.
Environment	An already strongly polluted Baltic Sea is particularly sensitive and vulnerable to further environmental deterioration and disasters.
Economic growth, diversity & investment	Peripheral locations and relatively high dependence on few sectors, such as tourism, agriculture and fishing, small local markets.
Maritime & marine safety & security	Risk of disasters resulting from major increase in oil transport and other hazardous transport through the Baltic Sea. Islands are vulnerable to pressures on marine life.
Limited labour markets	Low degree of movement creates an inflexible labour market with a limited range of job and career opportunities.
Peripherality	An extra journey away from anywhere. Competition policy discriminates against islands.
Public administration changes	Trend of governments taking tasks & responsibilities away from regions as more legislation originates from Brussels. Administration costs per capita higher e.g. there is no opportunity to offer services in co-operation with neighbouring municipalities.
Population decreasing & aging	Structural problems within the workforce: under-representation of 20-35 year olds, over representation of 50-65 year olds. Over representation of pensioners and people on disability benefits with the subsequent high health costs and strong conservative influences.
Urban areas more attractive than islands for young people.	Opportunities for youth are limited or not available on islands.
Limited tertiary education and training opportunities	Weak link in the triple helix mix. Higher education and R&D a vital element for innovation, creativity, economic growth and sustainable development



Rønne old town



Åland



Gotland

B7 Steering Committee 2007



Bjarne Kristiansen
Mayor of Bornholm
e-mail: Bjarne.Kristiansen@brk.dk



Eva Nypelius,
County Mayor of Gotland
e-mail: eva.nypelius@gotland.se



Maasel Hannes
County Governor Hiiu County
President of B7 2003
e-mail: hannes@mv.hiiumaa.ee



Uwe Ahlers
Member of County Council Rügen
President of B7 2004
e-mail: uwe.ahlers.consult@gmx.de



Toomas Kasemaa
County Governor Saare County
e-mail: toomas@saare.ee



Tommy Eliasson:
Deputy Mayor Mörbylånga Municipality
Deputy Mayor Ölands Kommunalförbund.
e-mail: tommy.eliasson@morbylanga.se



Britt Lundberg
Minster of Åland Government
e-mail: britt.lundberg@regeringen.ax



Björn Jansson
Deputy County Mayor
mail: bjorn.jansson@lgotland.se

Jørgen Kvist
Director
Regional Municipality of Bornholm
e-mail: Joergen.Kvist@brk.dk

Ulla Pettersson
Director for international affairs
Gotlandskommun
mail: ulla.pettersson@gotland.se

Kokovkin Reet
Advisor to the Governor
Hiiu County Government
Chairman B7 Board 2003
e-mail: Reet.Kokovkin@mv.hiiumaa.ee

Christoph Löwen
Landkreis Rügen
e-mail: christoph.loewen@landkreis-ruegen.de

Anu Vares
Advisor to the Governor
e-mail: Anu.Vares@saare.ee

Jörgen Samuelsson
EU Advisory Officer
Ölands Kommunalförbund
Chairman B7 Board 2002
e-mail: jeurgen.samuelsson@borgholm.se

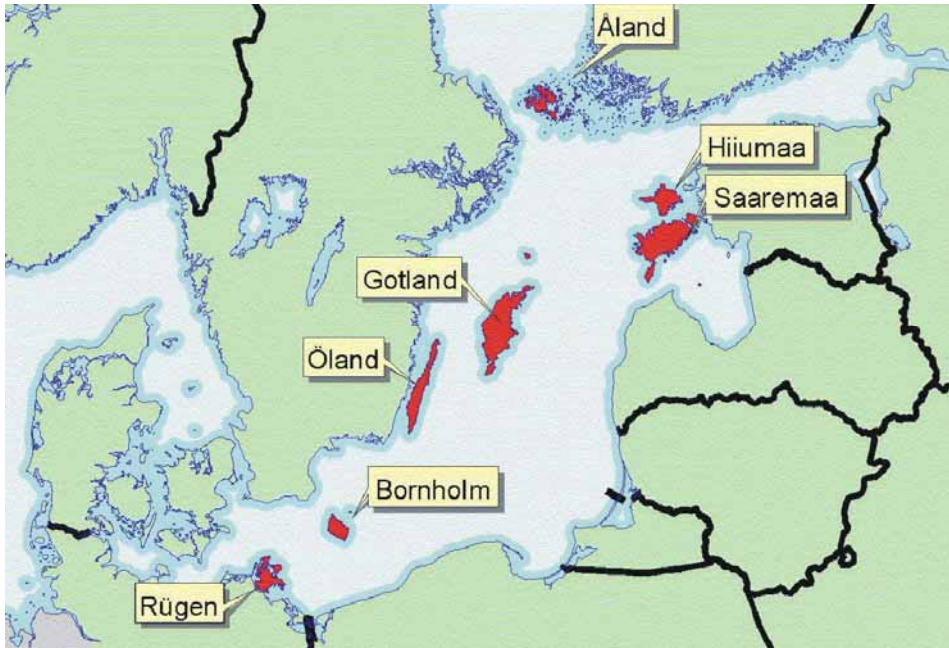
Susanne Andersson
Legal Adviser and Head of Unit
Åland Government
mail: susanne.andersson@regeringen.ax

Karen Lynn Jacobsen
B7 Bornholm Secretariat 2007
e-mail: B7@brk.dk



B7 Board 2007

B7 Islands



Christiansø

Bornholm - Denmark



EU Member 1973,
 Area: 587 km²
 Regional Municipality
 Population: 43,000
 Shortest distance to Denmark mainland: 138 km, by air 35 minutes. Sweden mainland: 70 km.

Bornholm is a municipality that because of its geographic position has some of the competencies of a region.

It has strengths in agriculture, light metal fabrication industry, speciality foods and tourism.

Industry has been restructured owing to the demise of the fishing industry in the early 90s. Frequency and speed of transport is key to development, particularly for the development the tourism industry.

Bornholm promotes itself as a green island and an attractive place to live and to visit.



Hammershus

Gotland - Sweden



EU Member 1995
 Area: 3,140 km²
 Population: 57,300
 1 kommun
 Shortest distance to mainland: 90 km 45 minutes by air.

Key growth profile areas on Gotland are experience tourism, interactive media, services linked to university strengths. At the regional level providing basic goods and services at the highest sustainable quality.

Gotland is regarded as an "exotic" part of Sweden with a quality image.

Through long term planning by local politicians and the beneficial regional policies of the government, Gotland is a competitive region of Sweden.

Good transport connections, particularly hourly flights to Stockholm have made the island very accessible.

A university and a conference facility for a 1000 people has ensured that Gotland is growing as an attractive region to do business. It suffers much less than other Baltic islands from the disappearance of young people going away to take an education.



Gotland

Saaremaa - Estonia

EU Member 2004;
 Area: 2,922 km²
 Population: 36,600
 Municipalities 16
 Shortest distance to mainland: 7 km (30 minutes on the ferry); 35 minutes by air to Tallinn

Key issue for Saaremaa is development of transport and infrastructure. It is working to gain approval to build a bridge to the mainland. Saaremaa is a very attractive tourism

destination, particularly for Estonians and Finns. Number of visitors from other countries is increasing. Spa tourism is a very successful niche in the market with 9 major spa hotels, 7 of them in the main town of Kuressaare. In summer 2008 an 18-hole golf course is opening in Kuressaare.

Saaremaa has air routes to Riga and Stockholm, plus a ferry connection with Ventspils (Latvia). Saaremaa has a yacht and boat building plus an electronics industry



Kuressaare Castle

Hiiumaa - Estonia



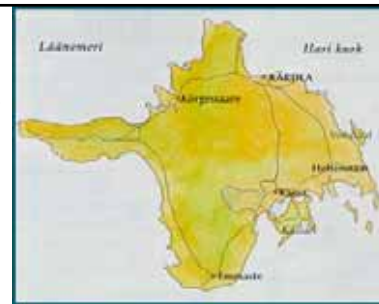
Hiiumaa

EU Member May 2004
 Area: 1019 km²
 Population: 10,000
 Municipalities 5
 Shortest distance to mainland: 22 km. (1½ hours by the ferry) 30 minutes by air to Tallinn

Hiiumaa is an island with a unique culture. It is twice the size of Bornholm, but has

only a quarter of the population. It is therefore challenging to provide a full level of services and provide an attractive living and work environment to encourage people to stay.

The main economic sectors are forestry, retail, plastic, transport, construction. Hiiumaa has strong potential for ecological tourism and the further development of agriculture.



Rügen - Germany



Rügen Fishermen

EU Member 1990
 Area: 976 km²
 Population: 70,260
 Municipalities 42
 Shortest distance to mainland: 3 km

Rügen, Germany's largest island, is connected by two bridges to the mainland. An expressway connects Rügen with the European motorway-network. You can reach Rügen by car, by train, by ferry and by little planes.

Tourism is the key industry. It has over 1,3 million visitors per year. Worth a

visit are the traditional bathing resorts such as Binz, the chalk cliffs with the "Königsstuhl", Kap Arkona with the two light houses, two national parks and a biosphere reserve, several manor houses and brick-stone Gothic churches, the alleyways, the steam-railway "Rasender Roland" the "car-free" island of Hiddensee and the beautiful landscape of the "Mönchgut".

Prosperous small and medium-sized enterprises and a service sector will continue to be the economic base. Rügen is a location with tradition and innovation. Agriculture, forestry, fishing and chalk industries have always existed on the island.



Öland - Sweden



Borgholm Castle

EU Member 1995
 Area: 1,342 km²
 Population: 24,500
 Municipalities
 Shortest distance to mainland: 4 km (not across bridge)

The Öland economy was largely dependent upon the resource industries of agriculture, fishing and limestone. Modern Öland now has a growing tourism industry, receiving 3 million visitors each year.

It is connected to the mainland by a bridge (6 072 m). The proximity to Kalmar, links it to a modern university, industry and services.

Öland has 2 municipalities: Borgholm in the north and Morbylånga in the south.

Öland Kommunalförbund is responsible for island issues that are better organised through municipal co-operation such as rescue service, tourism, EU matters, attracting new residents, business development.

A new summer ferry connection from the north of Öland to Gotland this year has opened up tourism in the north.

Öland works to attract new residents from Holland, Germany and Sweden to ensure the required educated workforce for growth and development.



Åland - Finland



Åland High Street

EU Member: 1995
 Area: 1,527 km²
 Population: 26,923
 Municipalities 16
 Shortest distance to mainland: 70 km.

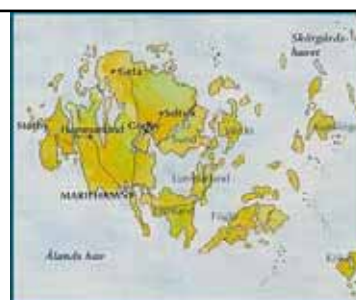
The Åland Islands are an autonomous, demilitarised Swedish speaking province of Finland consisting of more than 6,500 islands and skerries.

Over the last decade the population has

been rising - unique for Baltic islands.

Shipping provides the basis for Åland's wealth. Tourism is the next largest generator of employment on Åland. Although the area around Mariehamn has a high GNP, there are large internal differences between islands and communities.

The main focus is on taking advantage of Åland's autonomous status and to develop it. Taxation has been regarded as an interesting step.





B7 Annual Conference on Åland: December 2006



The Facilitator's Newsletter
David Hunt,
Ullasvej 17, DK-3700 Rønne, Bornholm
Phone: +45 2422 0251
E-mail: David.Hunt@brk.dk

Events in the B7 Calendar 2007

Date	Venue	Events
Jan 17-19	Berlin	Starting the Chairmanship year German EU Presidency
Mar 07-09	Brussels	Lobby visit to Commissioner Borg Visit key actors involved with the Maritime Green Book
Apr 16-17	Bornholm	Environment event & meeting: Baltic Sea Organisations (CBSS, BSSSC, CPMR-BSC, UBC, BSPP)
02-04 May	Bremen Germany	European consultation conference: German Presidency and Maritime Policy Green Paper
09 May	Kuressaare	EU Day Saaremaa : Theme Local Government reform and the EU
May 09-11	Port of Rønne Bornholm	Cruise Europe Annual General Assembly
Jun 03-05	Bornholm	Tourism Conference : Baltic Sea Region trends, strategies and branding
Jul 02-06	Bornholm	B7 Youth Camp
Oct 03-04	Karlskrona	Baltic Master final conference
Oct 08-10	CPH	Meet the Danish Government : New regions and municipalities. The Danish experience.
Oct 09-10	Brussels	Energy Conference: Islenet and B7
Nov 01-02	Bornholm	WG PtP Youth Conference
Dec 05-07	Bornholm	Annual Conference : Theme: Enterprise Development on Bornholm



A clean environment - an unpolluted Baltic Sea

Contact the B7 Islands

Bornholm
Jørgen Kvist
Regional Municipality of Bornholm
Tel: +45 5692 1011
Joergen.Kvist@brk.dk
www.brk.dk

Gotland
Ulla Petterson
Gotlands kommun
Tel: +46 498 269 940
ulla.petterson@gotland.se
www.gotland.se

Hiiumaa
Reet Kokovkin
Hiiumaa County Government
Tel: +372 46 36056
reet@mv.hiiumaa.ee
www.hiiumaa.ee

Saaremaa
Anu Vares
Saaremaa County Government
Tel: +372 45 20 507
Anu.Vares@saare.ee
www.saaremaa.ee

Rügen
Christoph Loewen
Landkreis Rügen
Tel: +49 3838 813 466
Christoph.Loewen@landkreis-ruegen.de

Åland
Sussane Andersson
Ålands Landskapsregering
Tel: +358 18 25 278
susanne.andersson@regeringen.ax
www.regeringen.ax

Öland
Jörgen Samuelsson
Ölands Kommunalförbund
Tel: +46 485 882 11
Jeurgen.Samuelsson@borgholm.se
www.info-oland.se

B7 Bornholm Secretariat
Karen Lynn Jacobsen
Tel: +45 5692 1305
B7@brk.dk
www.B7.org